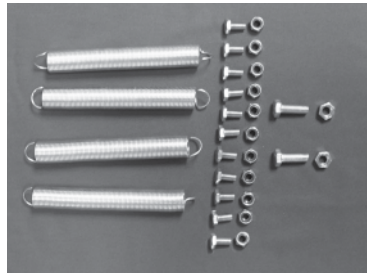


The Grazer

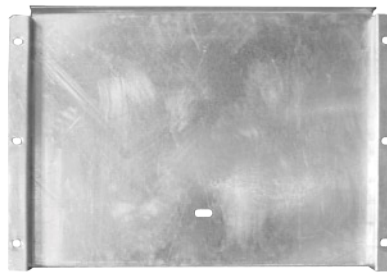
ASSEMBLY & INSTALLATION

Includes

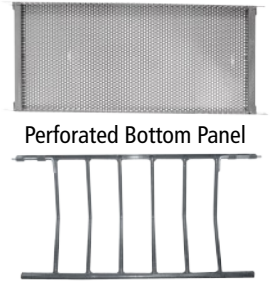
- 4 springs
- 12 bolts - 10mm x 25mm long
- 12 lock nuts - 10mm
- 2 bolts - 12mm x 30 long
- 2 standard nuts - 12mm
- 2 side panels
- 1 front panel
- 1 back panel
- 1 perforated bottom plate
- 1 feed trough grate



Side Panel

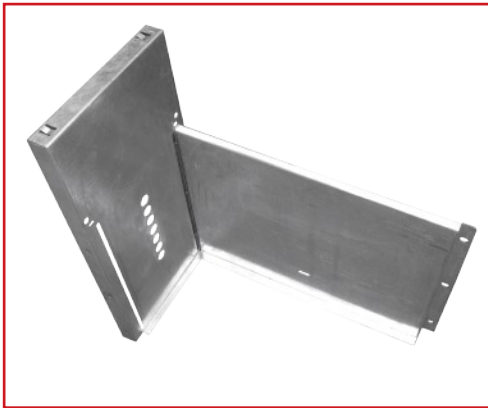


Front and Back Panel



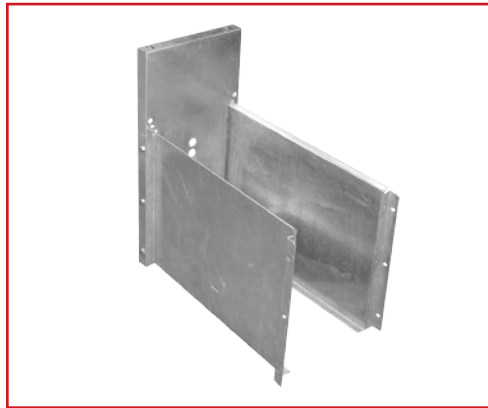
Perforated Bottom Panel

Feed Trough Grate



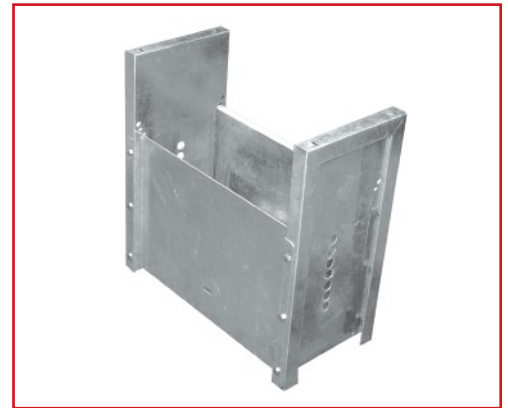
Step 1

Fasten loosely, front panel to side panel with three 10mm bolts and lock nuts.



Step 2

Fasten loosely, back panel to side panel with three 10mm bolts and lock nuts.



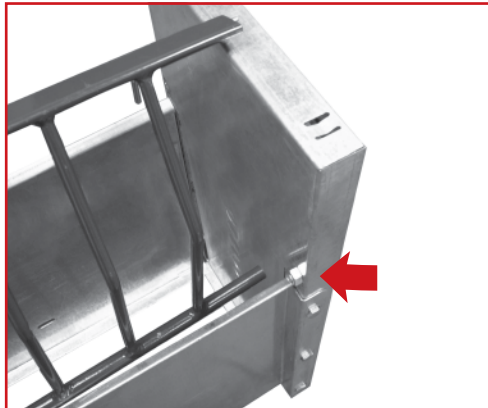
Step 3

Fasten second side to front and back panels with the 6 remaining 10mm bolts and lock nuts.



Step 4

Place perforated bottom plate into slots at the bottom of grazer.



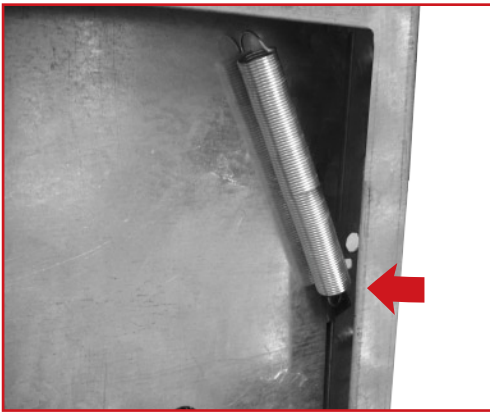
Step 5

Fasten 12mm bolt and nut through side panel hole just above back panel. Repeat on second side panel.



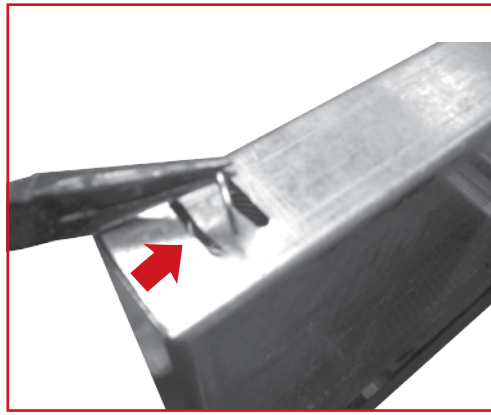
Step 6

Slip end of feed trough grate onto bolt. Repeat on second side panel and tighten all bolts previously fastened.



Step 7

Hook spring through the perforated bottom plate on the inside of the end panel.



Step 8

Pull the end of spring up into side panel hole and loop through the lower hole



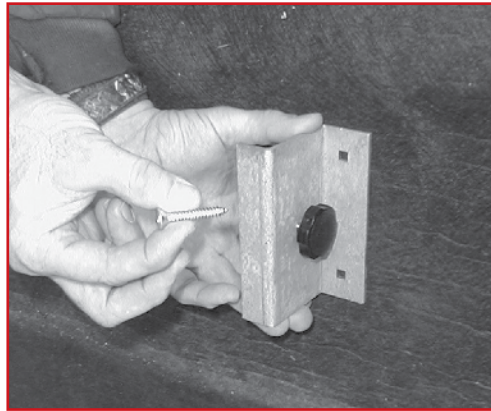
Assembled Grazer

Mounting The Grazer to Wooden Wall



Step 1

Set the Grazer against the wall you intend to mount it on. Place the mounting bracket on each side of the unit, (lower than the feed through grate) and mark the position for the lag screw holes. Drill the holes.



Step 2

Put brackets in place and screw lag screws, into the wall. Drop the Grazer down into place. Install Thumb screws into tapped holes of brackets.



Step 3

Tighten thumbscrews to secure feeder.



DOUBLE L GROUP_{LLC}

PO Box 324, 2020 Beltline Road, Dyersville, Iowa 52040-0324 *toll-free* 800-553-4102 *ph* 563-875-6257 *fx* 563-875-6258 *e-mail* sales@doublel.com *web* www.doublel.com

DISCLAIMER OF WARRANTIES AND LIMITATION OF REMEDIES: DOUBLE L GROUP, LTD. DISCLAIMS ANY AND ALL WARRANTIES, EXPRESS OR IMPLIED, INCLUDING, WITHOUT LIMITATION, WARRANTIES OF MERCHANTABILITY OR FITNESS FOR A PARTICULAR PURPOSE. UNDER NO CIRCUMSTANCES, SHALL DOUBLE L GROUP, LTD. OR ANY OF ITS EMPLOYEES, DIRECTORS, OFFICERS, OR AGENTS, BE LIABLE FOR ANY DIRECT OR INDIRECT LOSSES OR DAMAGES ARISING FROM OR RELATED TO ANY PRODUCT PURCHASED, WHETHER SUCH DAMAGES ARE GENERAL, SPECIAL, CONSEQUENTIAL, INCIDENTAL, ECONOMIC, EXEMPLARY OR OTHERWISE (INCLUDING BUT NOT LIMITED TO DAMAGE OR INJURIES TO PERSONS, PROPERTY, OR ANIMALS). WHETHER IN TORT OR CONTRACT, EVEN IF AN AUTHORIZED REPRESENTATIVE OF DOUBLE L GROUP, LTD. HAS BEEN ADVISED OF OR SHOULD HAVE KNOWN OF THE POSSIBILITY OF SUCH DAMAGES.